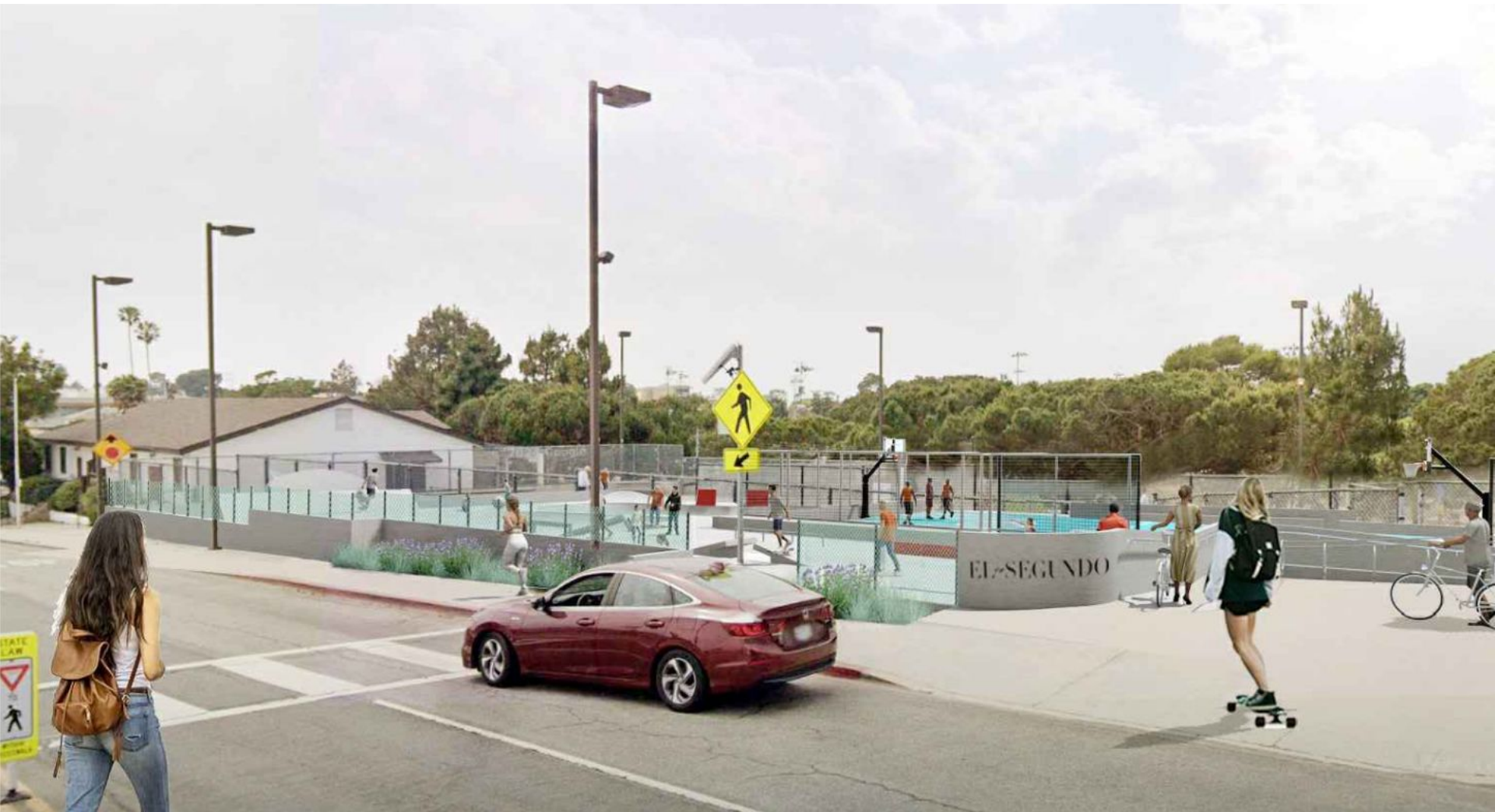


# El Segundo Recreation Park – Phase 1 Teen Center and Teen Plaza

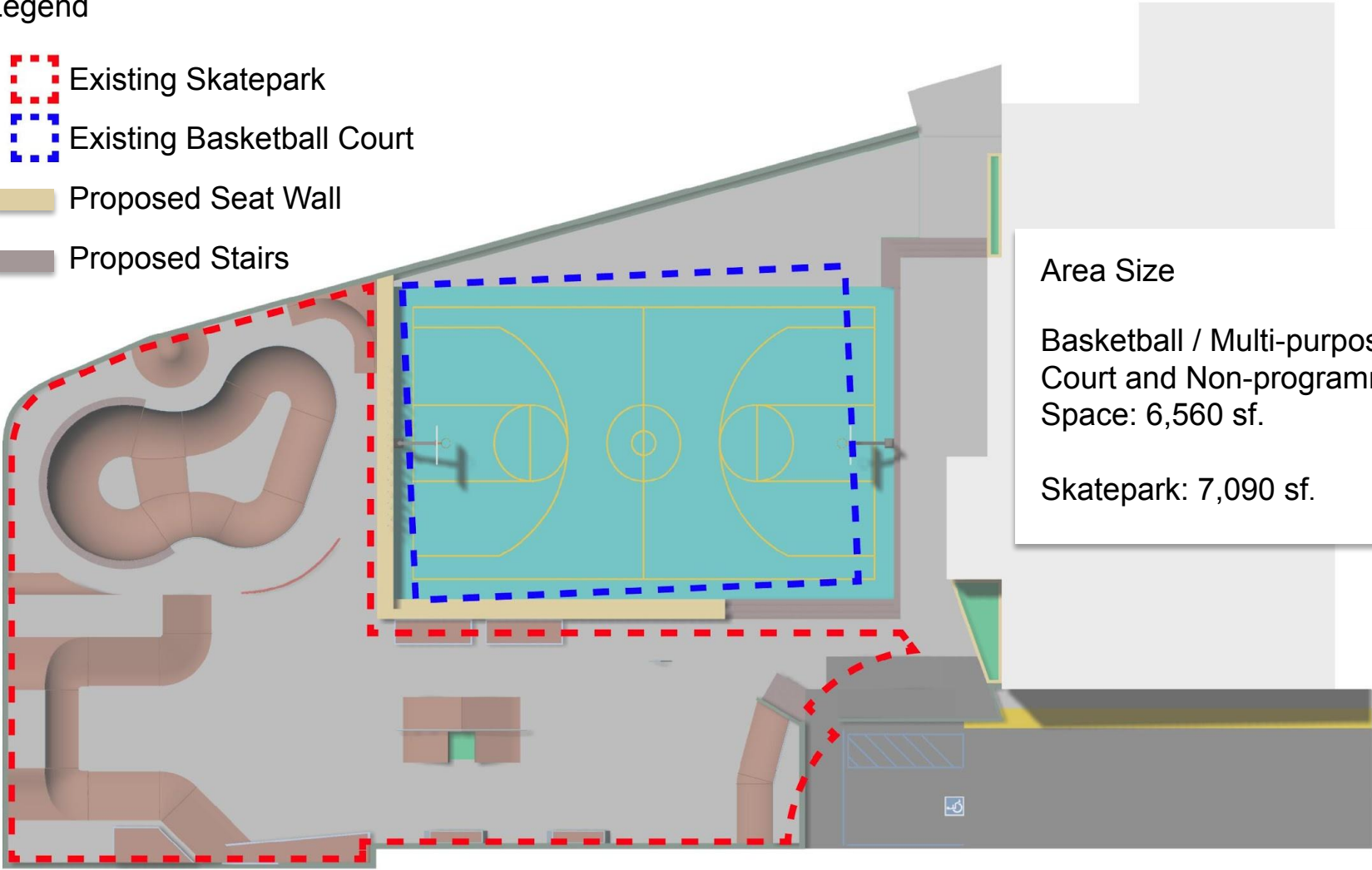


Recreation & Parks Commission Meeting  
September 17, 2025

# Option 2 – New Basketball / Multi-Purpose Court

## Legend

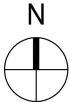
- Existing Skatepark
- Existing Basketball Court
- Proposed Seat Wall
- Proposed Stairs



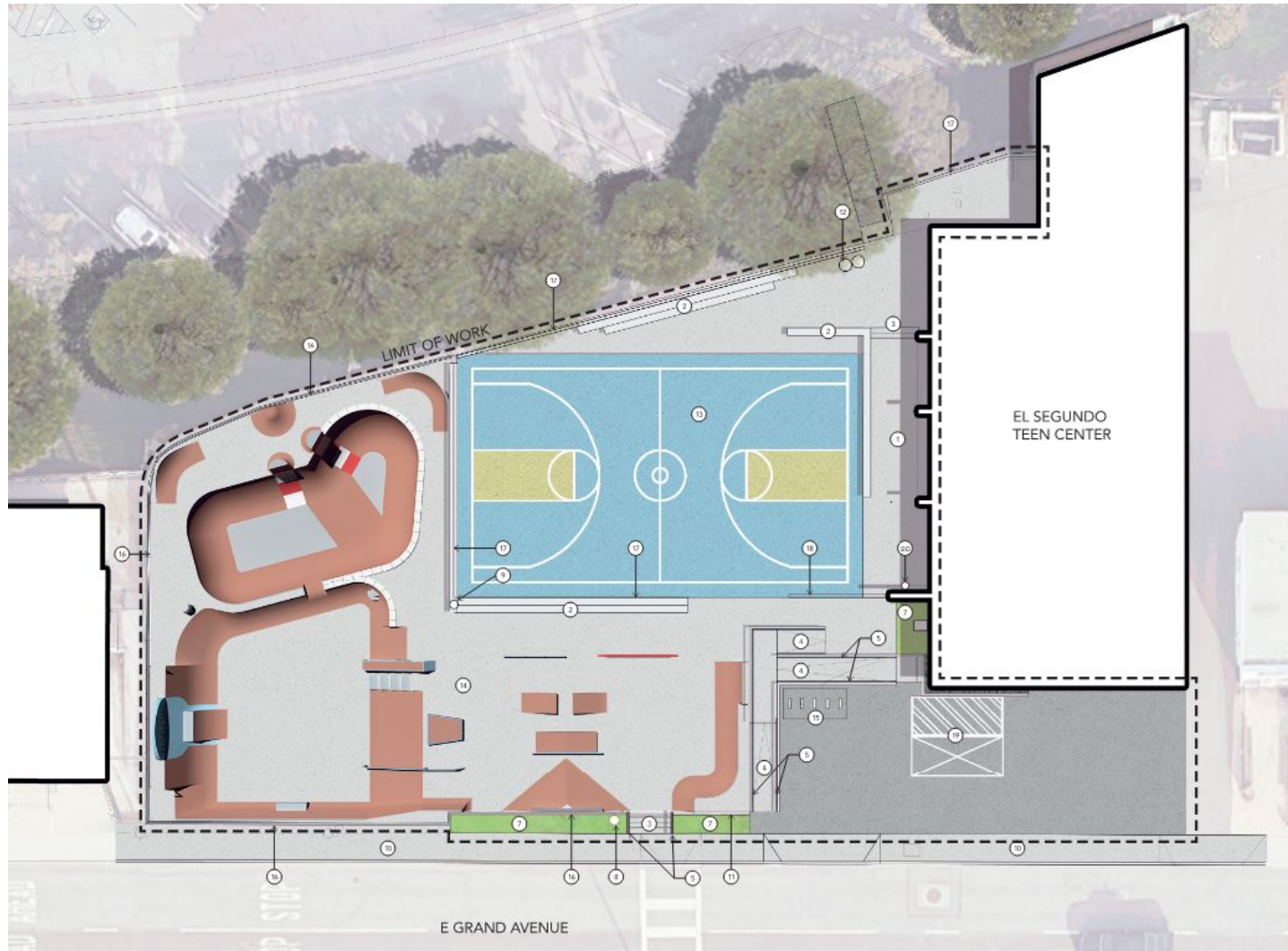
Area Size

Basketball / Multi-purpose Court and Non-programmed Space: 6,560 sf.

Skatepark: 7,090 sf.





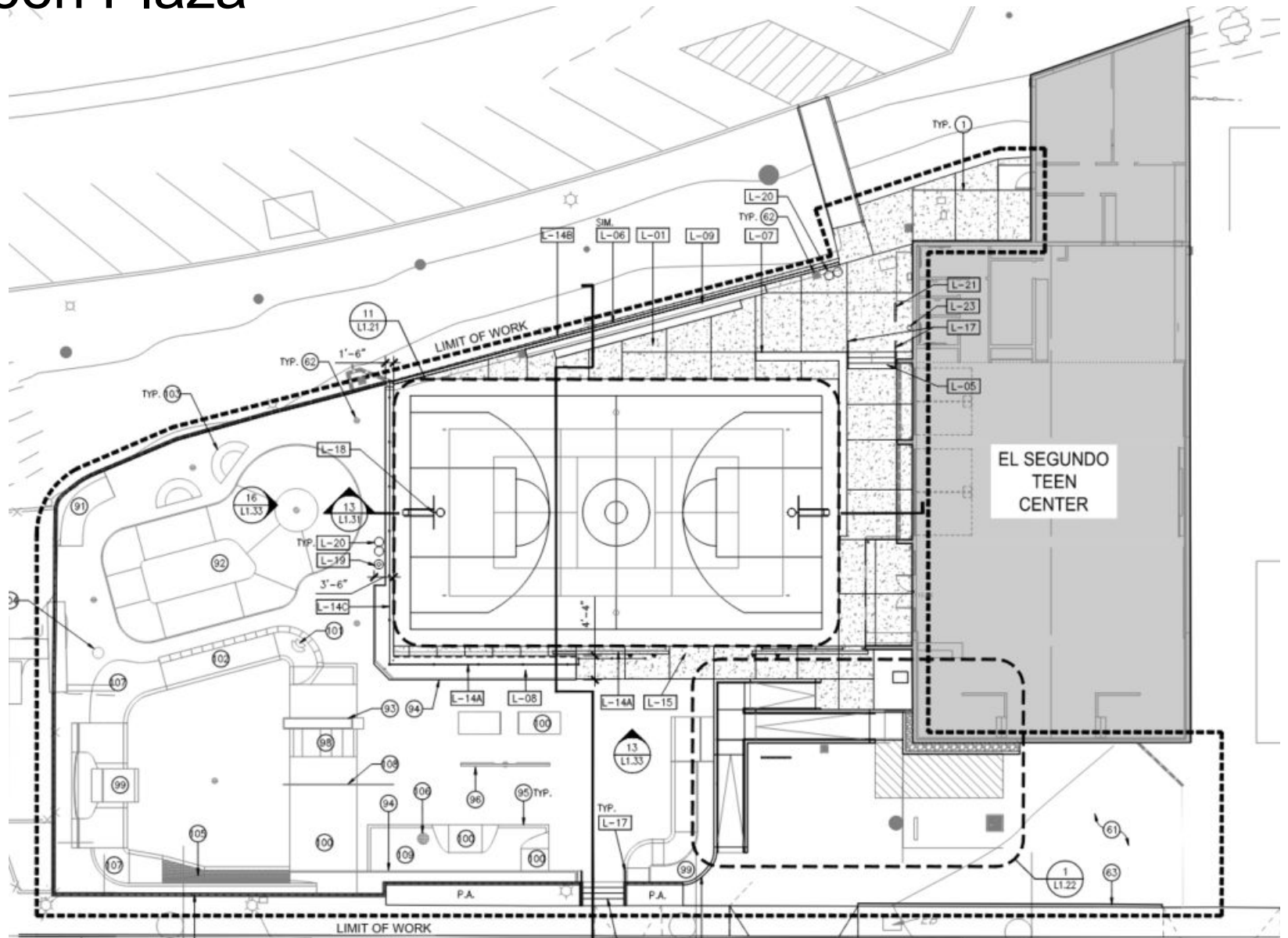


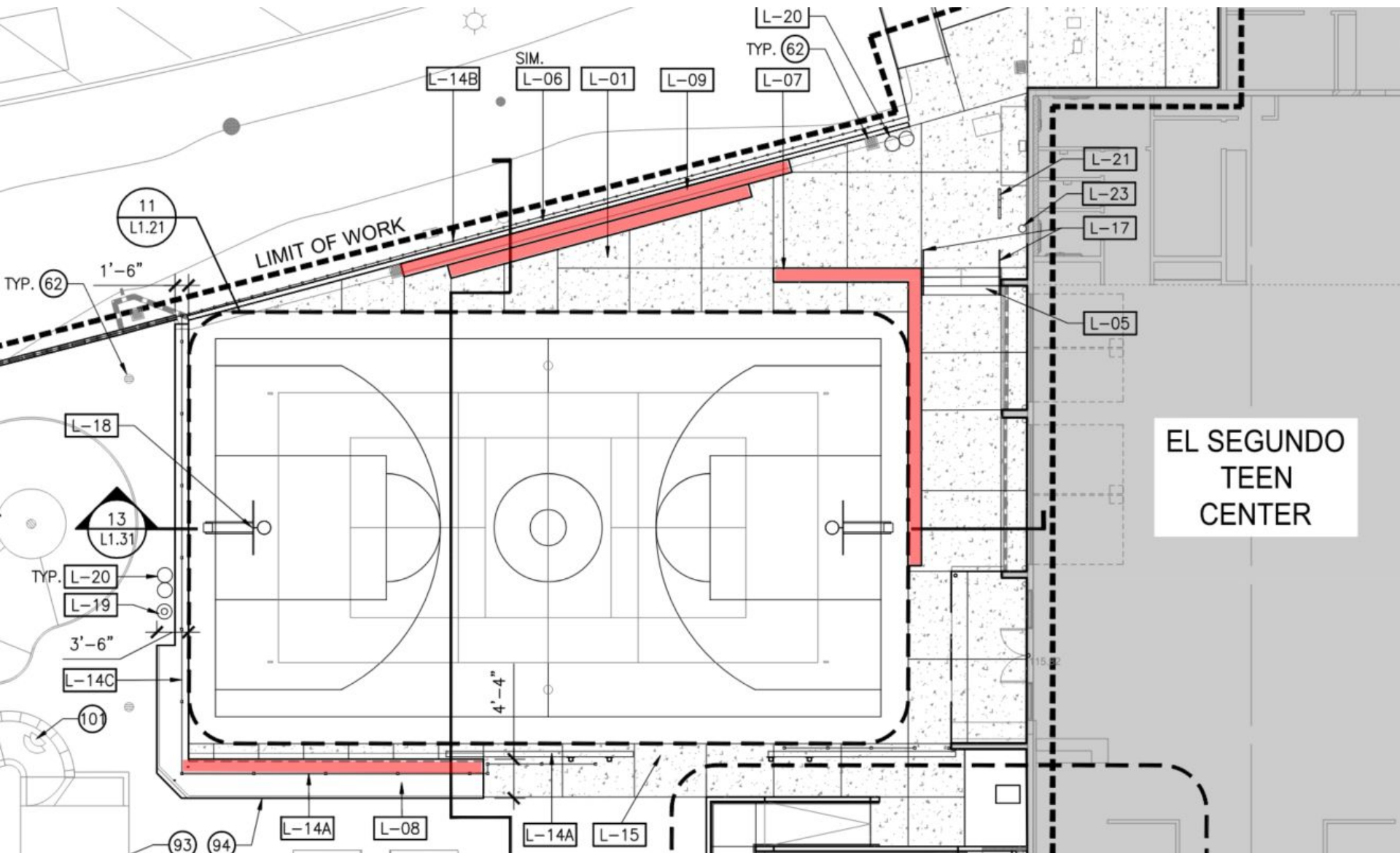
## KEYNOTES

- ① Concrete Pavement
- ② Cast-in-place Concrete Seatwall
- ③ Cast-in-place Concrete Steps
- ④ Concrete Ramp
- ⑤ Handrail at Ramp
- ⑥ Handrail at Steps
- ⑦ Planting Area
- ⑧ (E) Light to Remain
- ⑨ Security Light
- ⑩ (E) Concrete Walk to Remain
- ⑪ Monument Sign
- ⑫ Trash Receptacle
- ⑬ Multipurpose court
- ⑭ Skate Park
- ⑮ Bike Rack
- ⑯ 42" High Perimeter Fence
- ⑰ 8' High Court Fence
- ⑱ 20' Wide Sliding Gate
- ⑲ ADA Parking
- ⑳ Bottle Filler

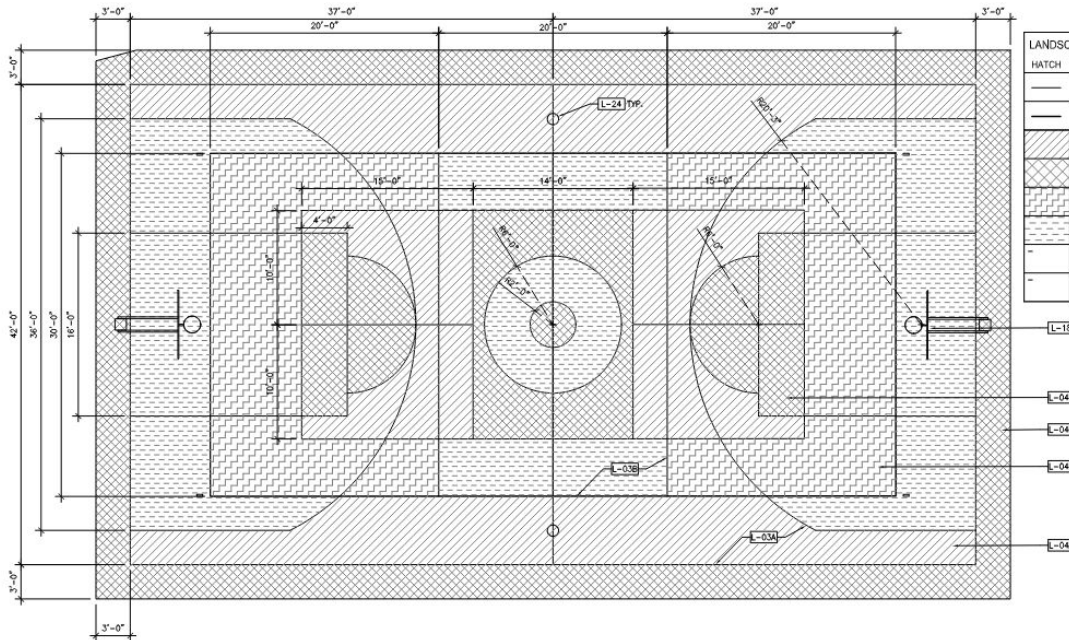
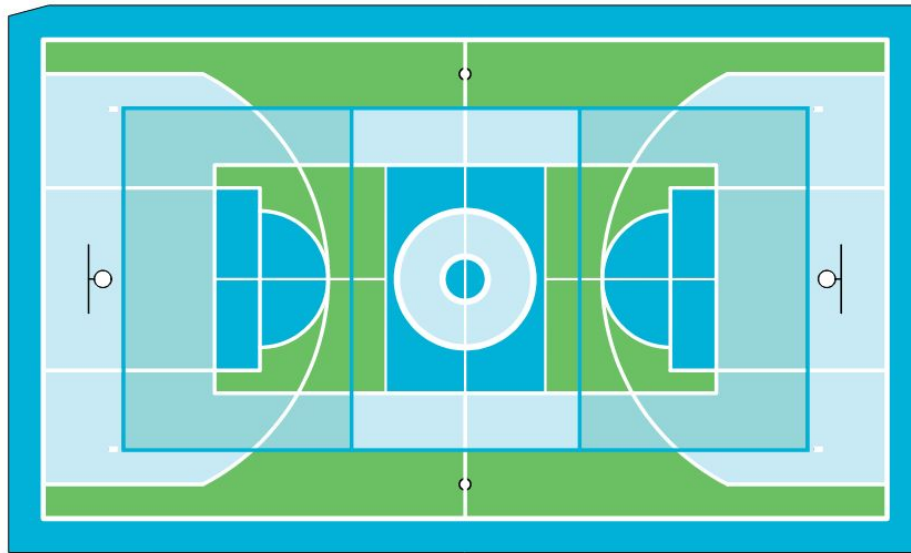


# Teen Plaza





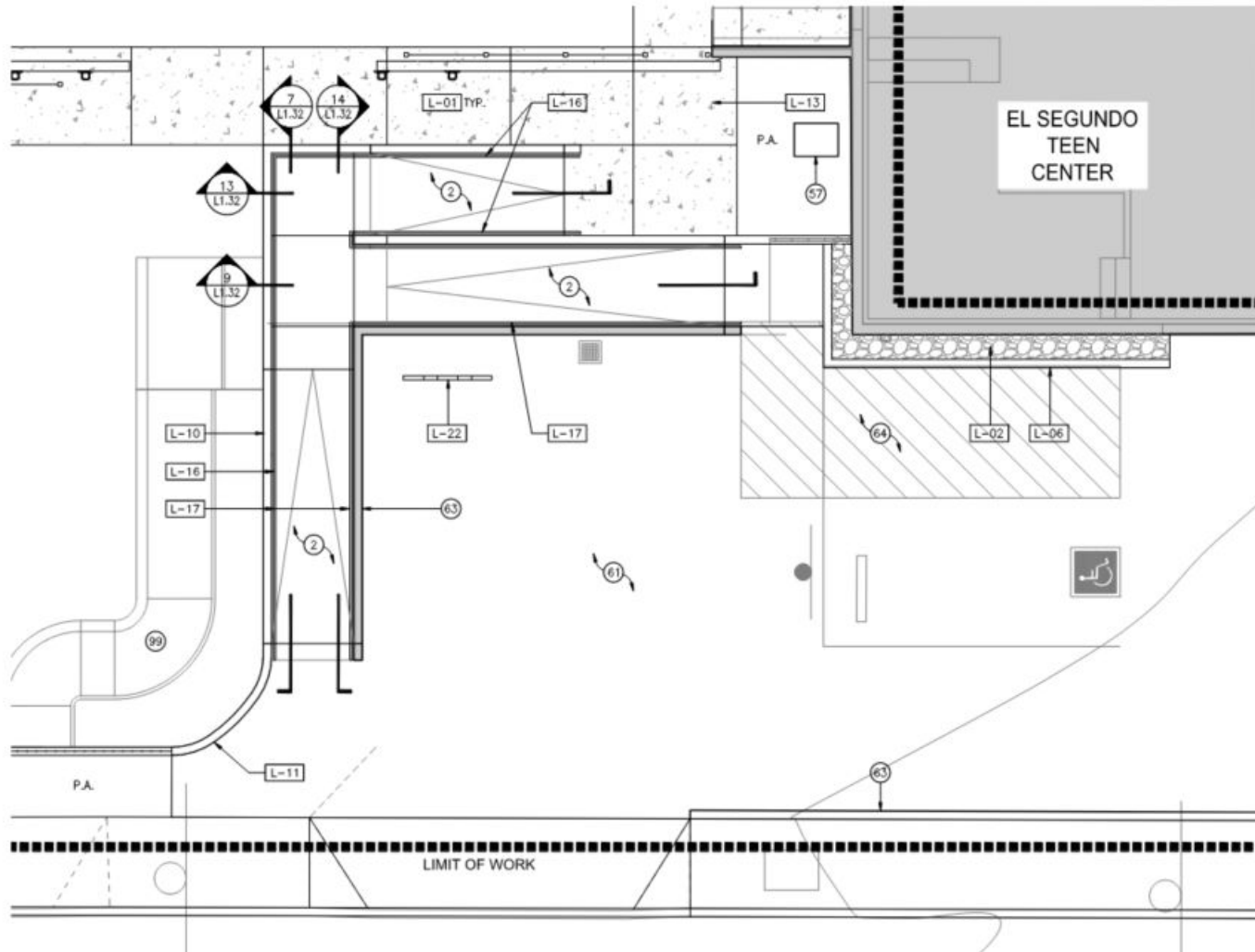
EL SEGUNDO  
TEEN  
CENTER

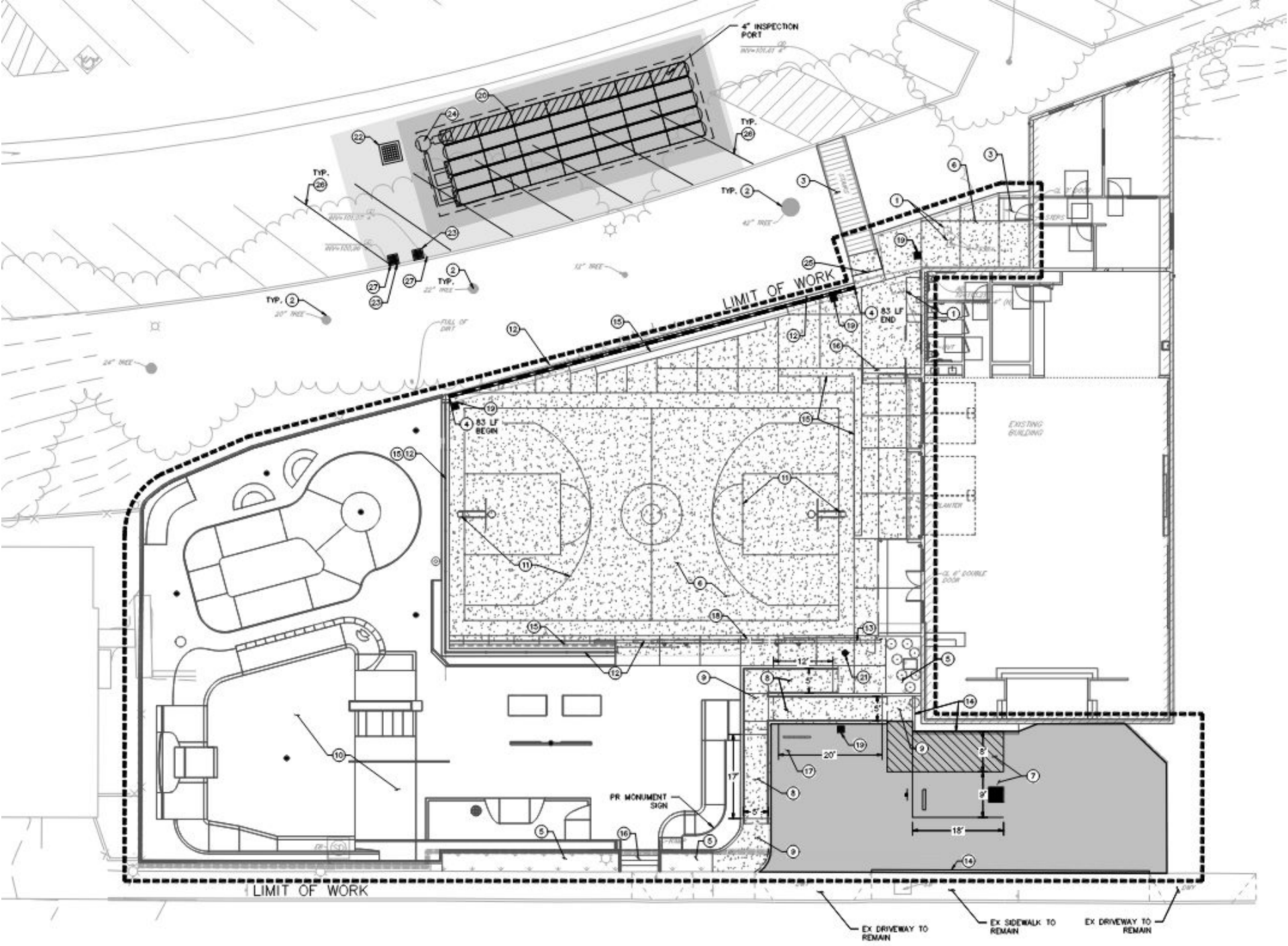


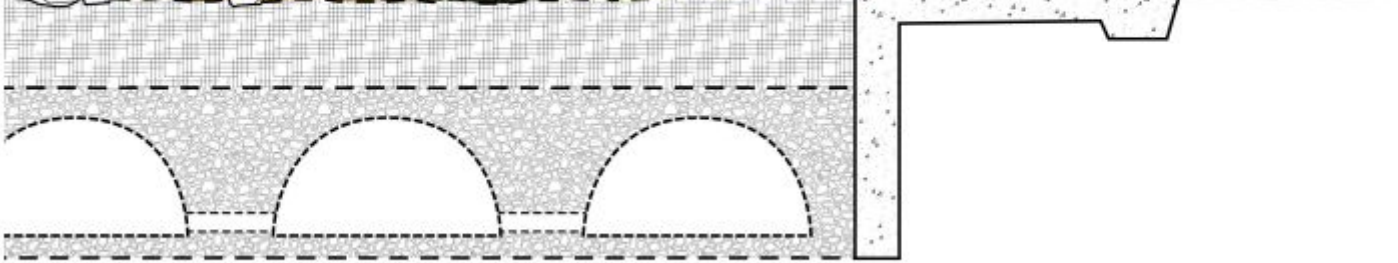
LANDSCAPE CONSTRUCTION SCHEDULE:

HATCH	KEY	ITEM / DESCRIPTION	COLOR / SRI
---	L-03A	SPORT COURT SURFACE / SB-150 COOL COATING BY STREETBOND	"SR WHITE"
---	L-03B	SPORT COURT SURFACE / SB-150 COOL COATING BY STREETBOND	"PM6 640C"
---	L-04A	SPORT COURT SURFACE / SB-150 COOL COATING BY STREETBOND	"OL SHAMROCK GREEN"
---	L-04B	SPORT COURT SURFACE / SB-150 COOL COATING BY STREETBOND	"PM6 640C"
---	L-04C	SPORT COURT SURFACE / SB-150 COOL COATING BY STREETBOND	"PM6 637"
---	L-04D	SPORT COURT SURFACE / SB-150 COOL COATING BY STREETBOND	"PM6 745T"
---	L-18	BASKETBALL POST / THOR PLANTHUM	"BLACK"
---	L-24	VOLLEBALL POST SLEEVE (3.5") /SKR: POP-SLEEVE	ALUMINUM WITH POWDER COATED ALUMINUM CAP

SEE SHEET L1.00 FOR COMPLETE SCHEDULE.

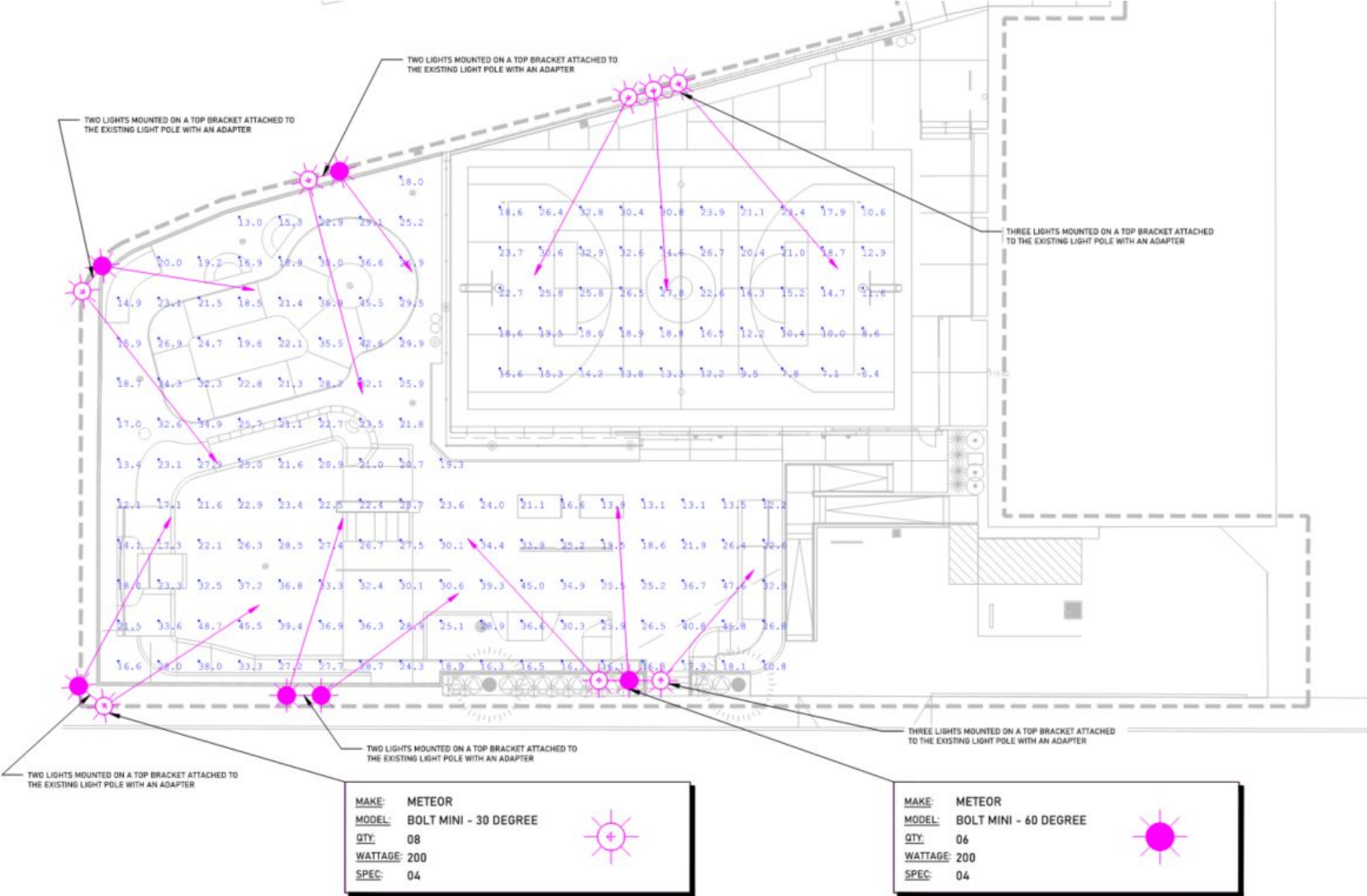




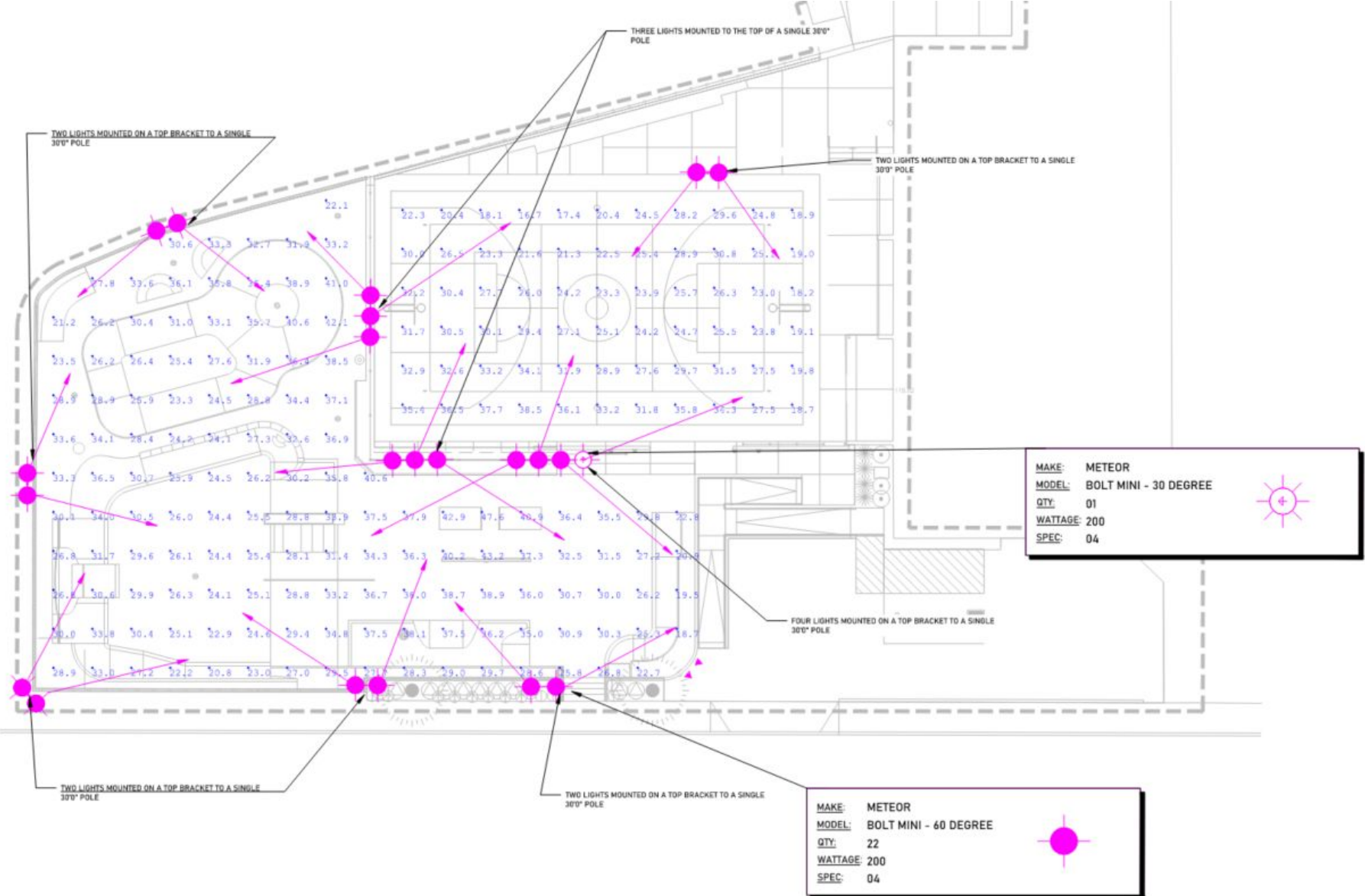


**Underground Infiltration**

# Site Lighting – Reuse Existing Poles



# Site Lighting – New Poles



# Site Lighting – Summary

Calculation Summary							
Label	CalcType	Units	Avg	Max	Min	Avg/Min	Max/Min
BASKETBALL COURT	Illuminance	Fc	19.35	34.6	6.4	3.02	5.41
SKATEPARK	Illuminance	Fc	25.74	48.7	10.8	2.38	4.51

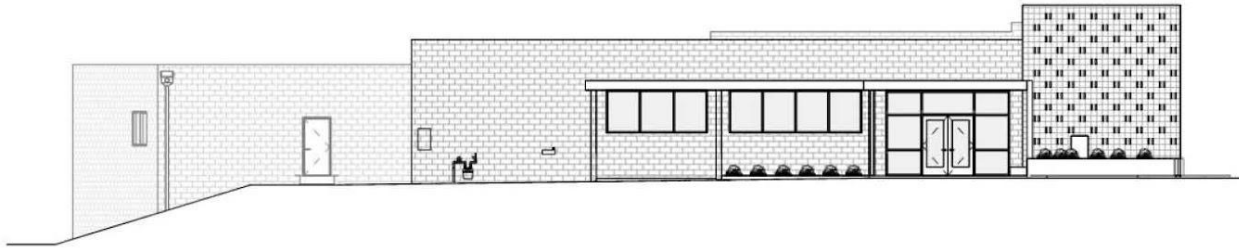
Existing

Calculation Summary							
Label	CalcType	Units	Avg	Max	Min	Avg/Min	Max/Min
BASKETBALL COURT	Illuminance	Fc	27.02	38.5	16.7	1.62	2.31
SKATEPARK	Illuminance	Fc	30.78	47.6	18.7	1.65	2.55

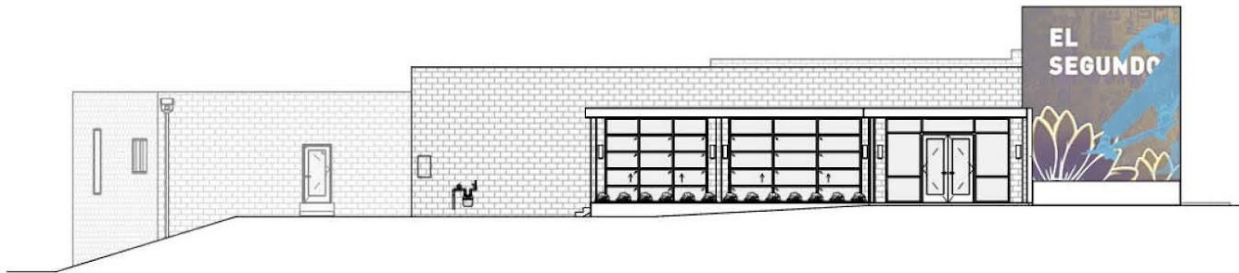
New

# Teen Center

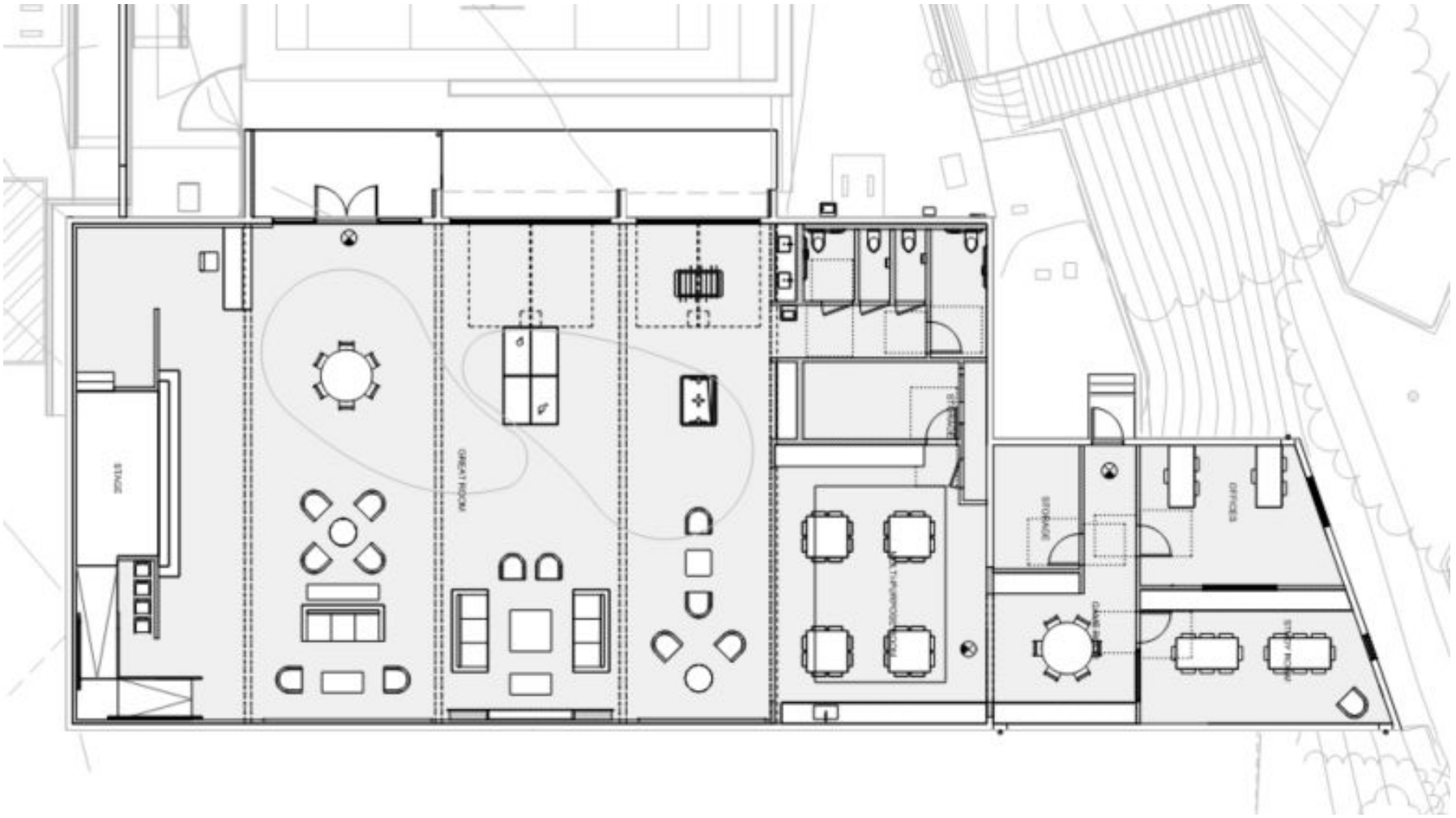




EXISTING WEST ELEVATION



PROPOSED WEST ELEVATION

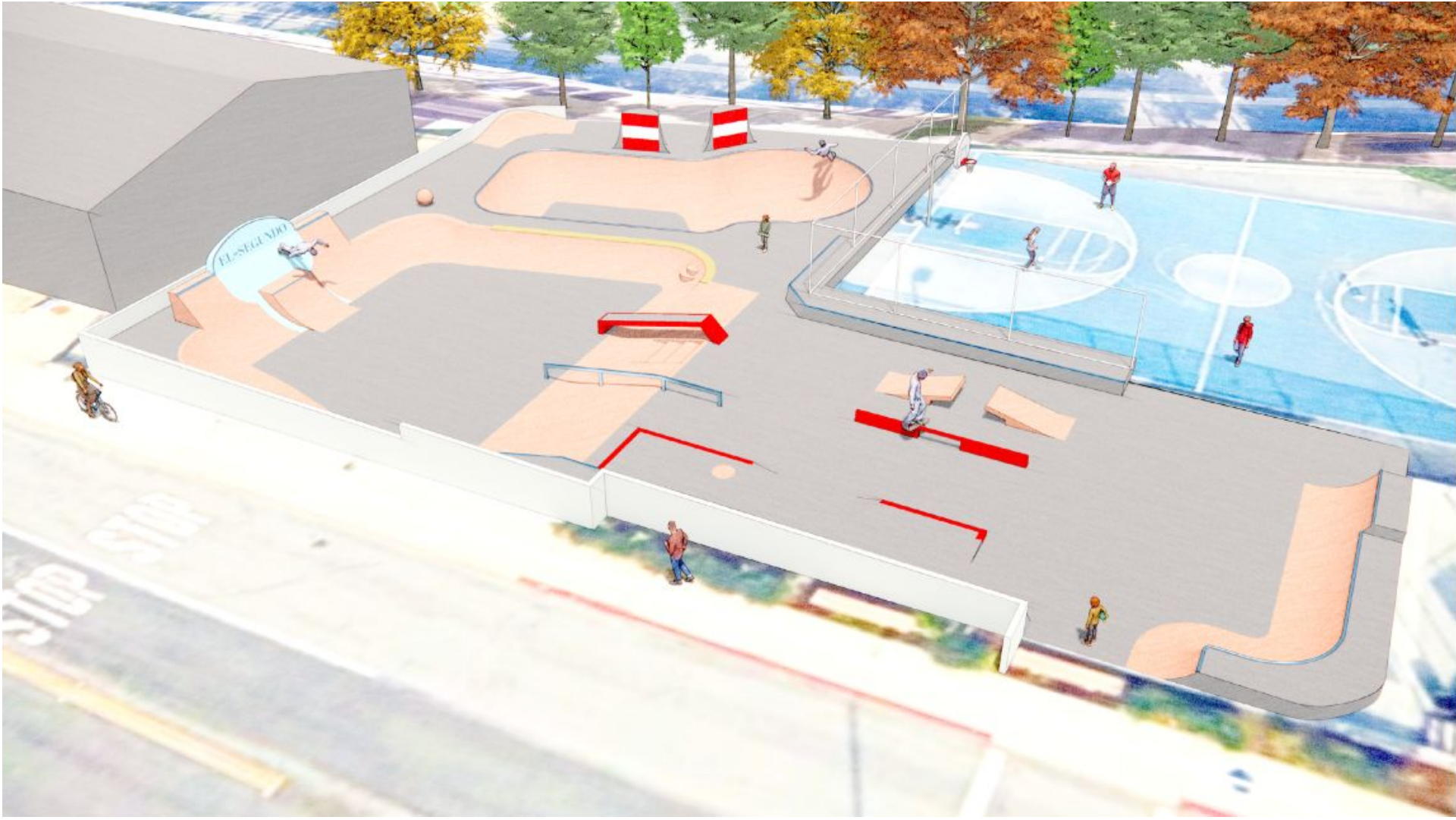








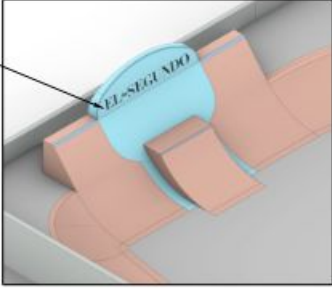
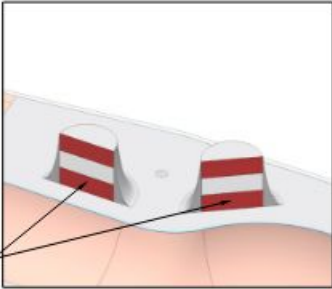
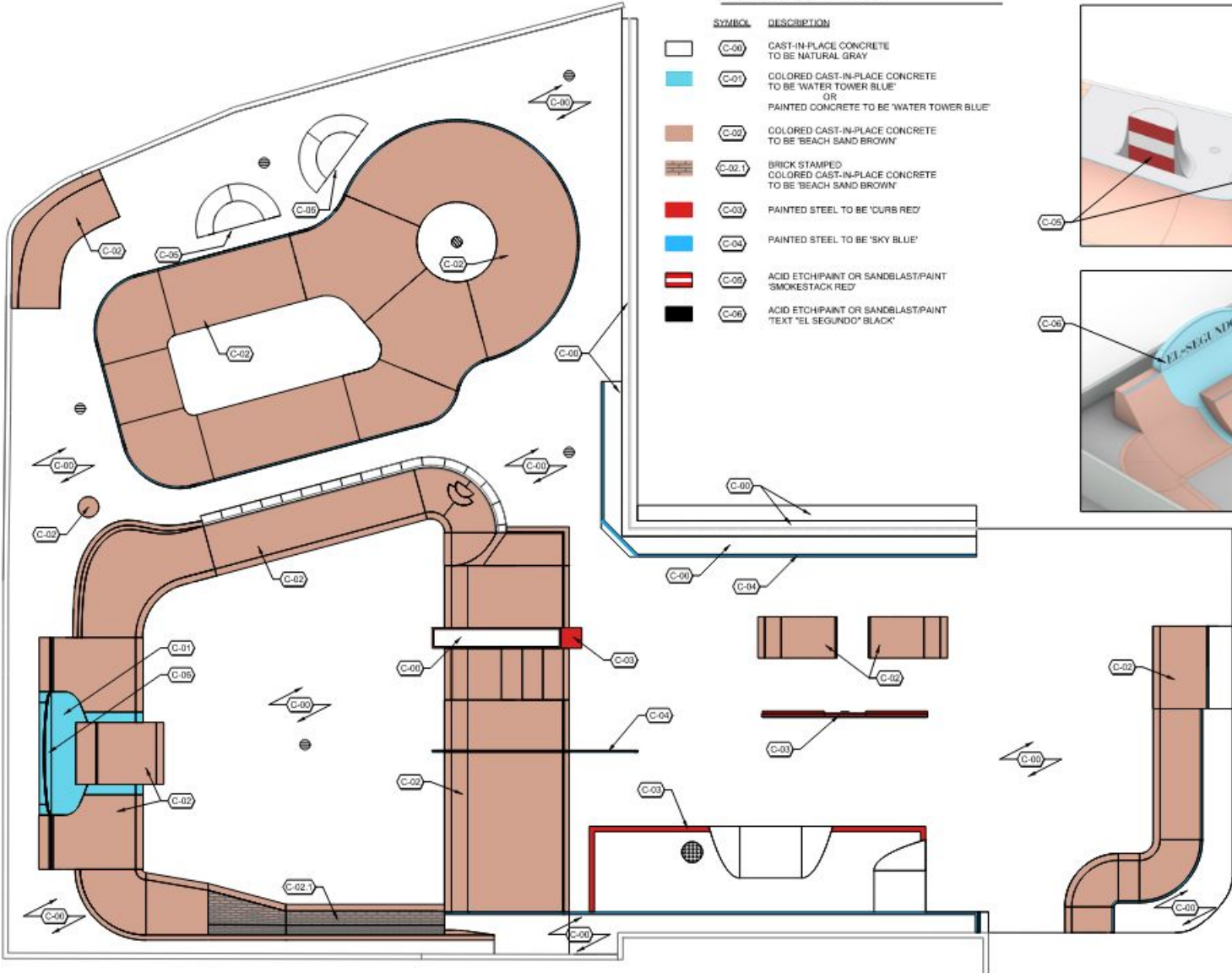
# Skatepark

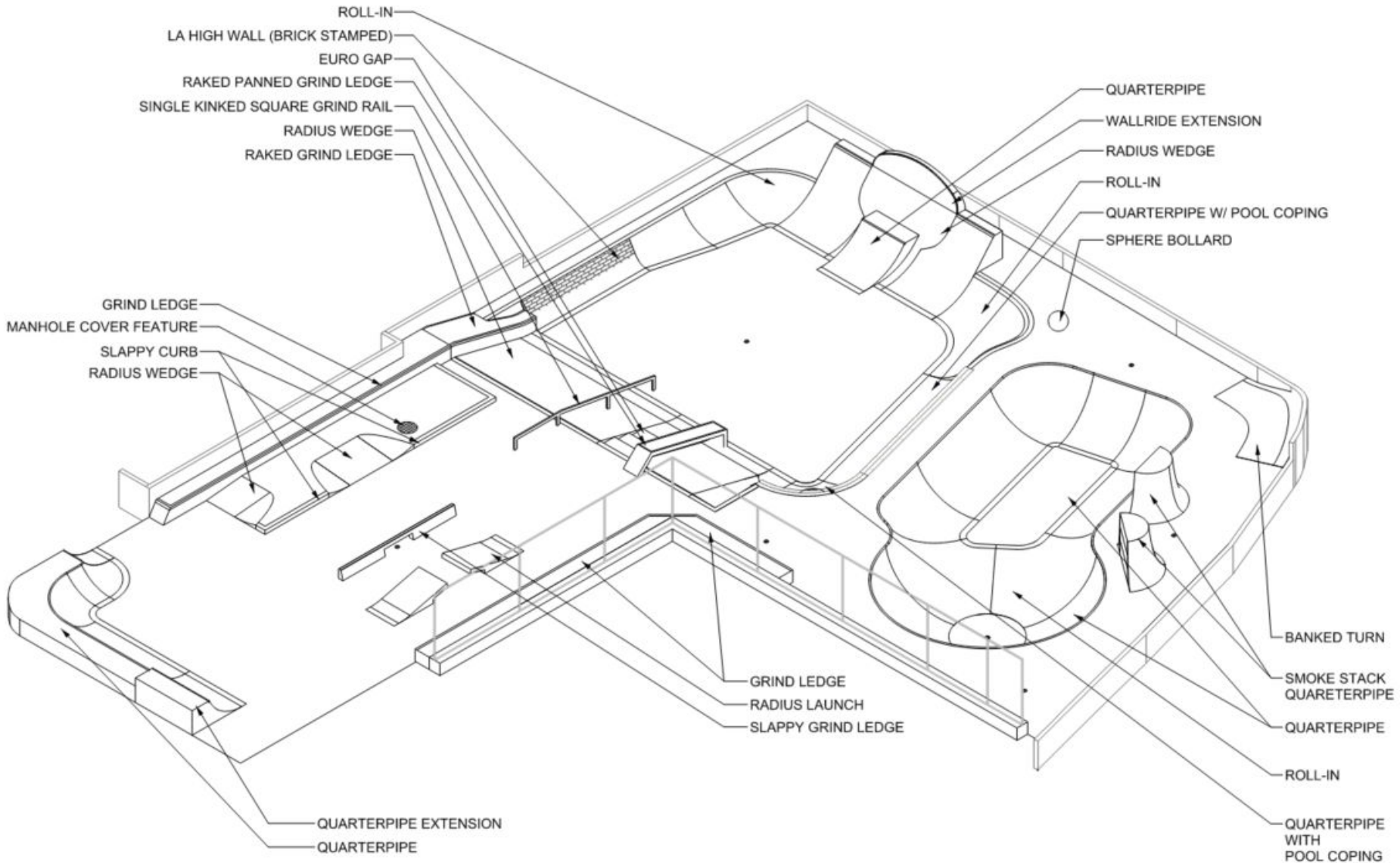


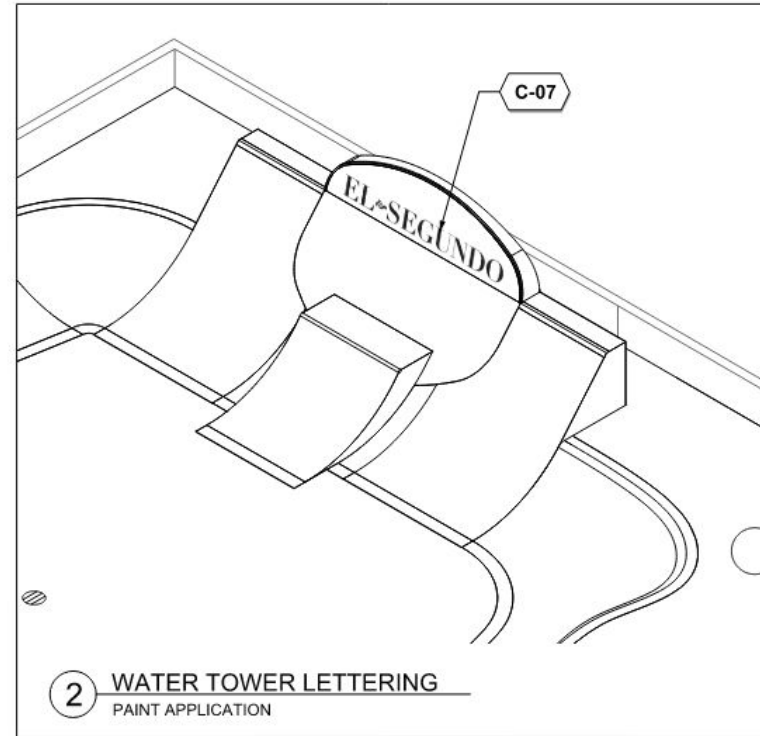
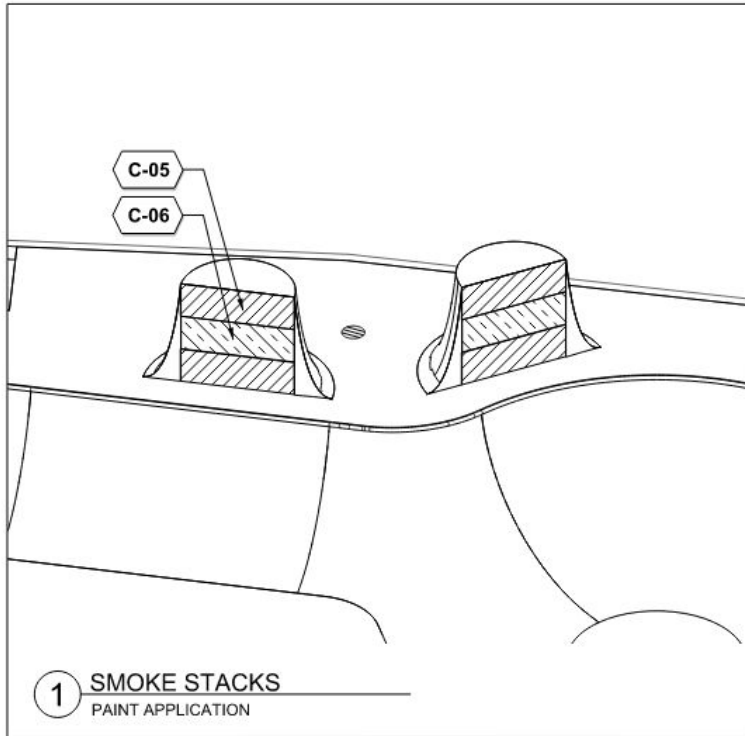


### COLOR SCHEDULE

SYMBOL	DESCRIPTION
	C-00 CAST-IN-PLACE CONCRETE TO BE NATURAL GRAY
	C-01 COLORED CAST-IN-PLACE CONCRETE TO BE 'WATER TOWER BLUE' OR PAINTED CONCRETE TO BE 'WATER TOWER BLUE'
	C-02 COLORED CAST-IN-PLACE CONCRETE TO BE 'BEACH SAND BROWN'
	C-02.1 BRICK STAMPED COLORED CAST-IN-PLACE CONCRETE TO BE 'BEACH SAND BROWN'
	C-03 PAINTED STEEL TO BE 'CURB RED'
	C-04 PAINTED STEEL TO BE 'SKY BLUE'
	C-05 ACID ETCH/PAINT OR SANDBLAST/PAINT 'SMOKESTACK RED'
	C-06 ACID ETCH/PAINT OR SANDBLAST/PAINT TEXT 'EL SEGUNDO' BLACK







# Cost Estimate

Teen Center and Plaza Renovation			
Site Work	1	Lump Sum	\$ 1,295,228.00
Teen Center	1	Lump Sum	\$ 1,685,204.00
Skatepark	1	Lump Sum	\$ 674,627.00
Stormwater Treatment (Measure W)	1	Lump Sum	\$ 175,500.00
<b>Direct Costs</b>			<b>\$ 3,830,559.00</b>
General Conditions, Bonds & Insurance, Overhead & Profit, Contingency, and Escalation	27.5	Percent	\$ 1,054,439.00
<b>Total</b>			<b>\$ 4,884,998.00</b>

Add Alternatives			
Skatepark: Water Tower Lettering on Gray Concrete	1	LS	\$ 3,000.00
Skatepark: Water Tower Lettering Polyaspartic Coating	1	LS	\$ 11,000.00
Color	1	LS	\$ 24,100.00
Skatepark: Cooling Towers Polyaspartic Paint	1	LS	\$ 6,625.00
Lighting Reuse	1	LS	\$ 32,726.00
Lighting New	1	LS	\$ 96,426.00

# Schedule

## **Plan Check and Permitting – Current**

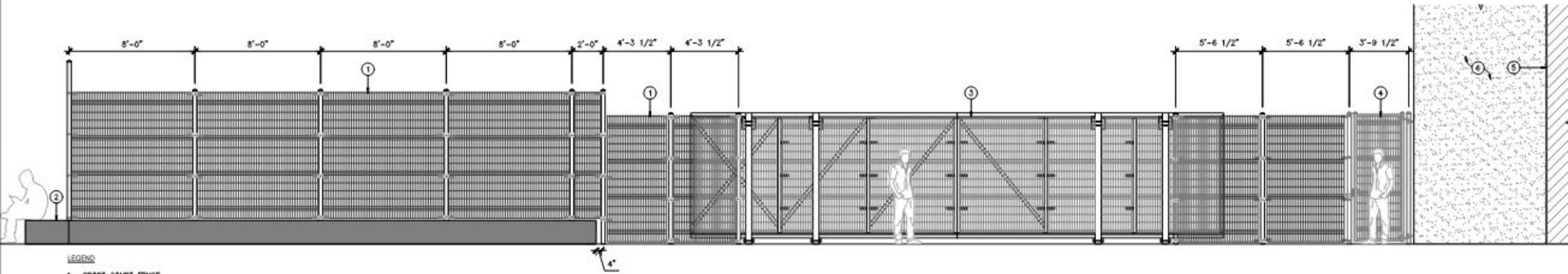
Revise and update documents

Submit 100% CD – September 30, 2025

**City Council Presentation – October 7, 2025**

**Issue for bid – October 8, 2025**

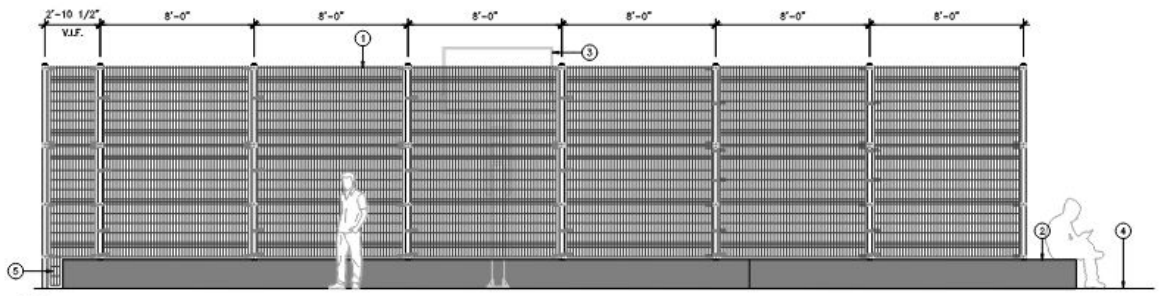




LEGEND

- 1. SPORT COURT FENCE.
- 2. CONCRETE SEATWALL.
- 3. DOUBLE-SLIDING GATE.
- 4. PEDESTRIAN SWING GATE.
- 5. FACE OF BUILDING.
- 6. BUILDING WING WALL.

13 SOUTH ELEVATION  
SCALE: 3/8" = 1'-0"



LEGEND

- 1. SPORT COURT FENCE.
- 2. CONCRETE SEATWALL.
- 3. BASKETBALL GOAL (BEYOND).
- 4. FINISHED SURFACE.
- 5. CUSTOM CUT PANEL AT END OF SEATWALL.

16 WEST ELEVATION  
SCALE: 3/8" = 1'-0"