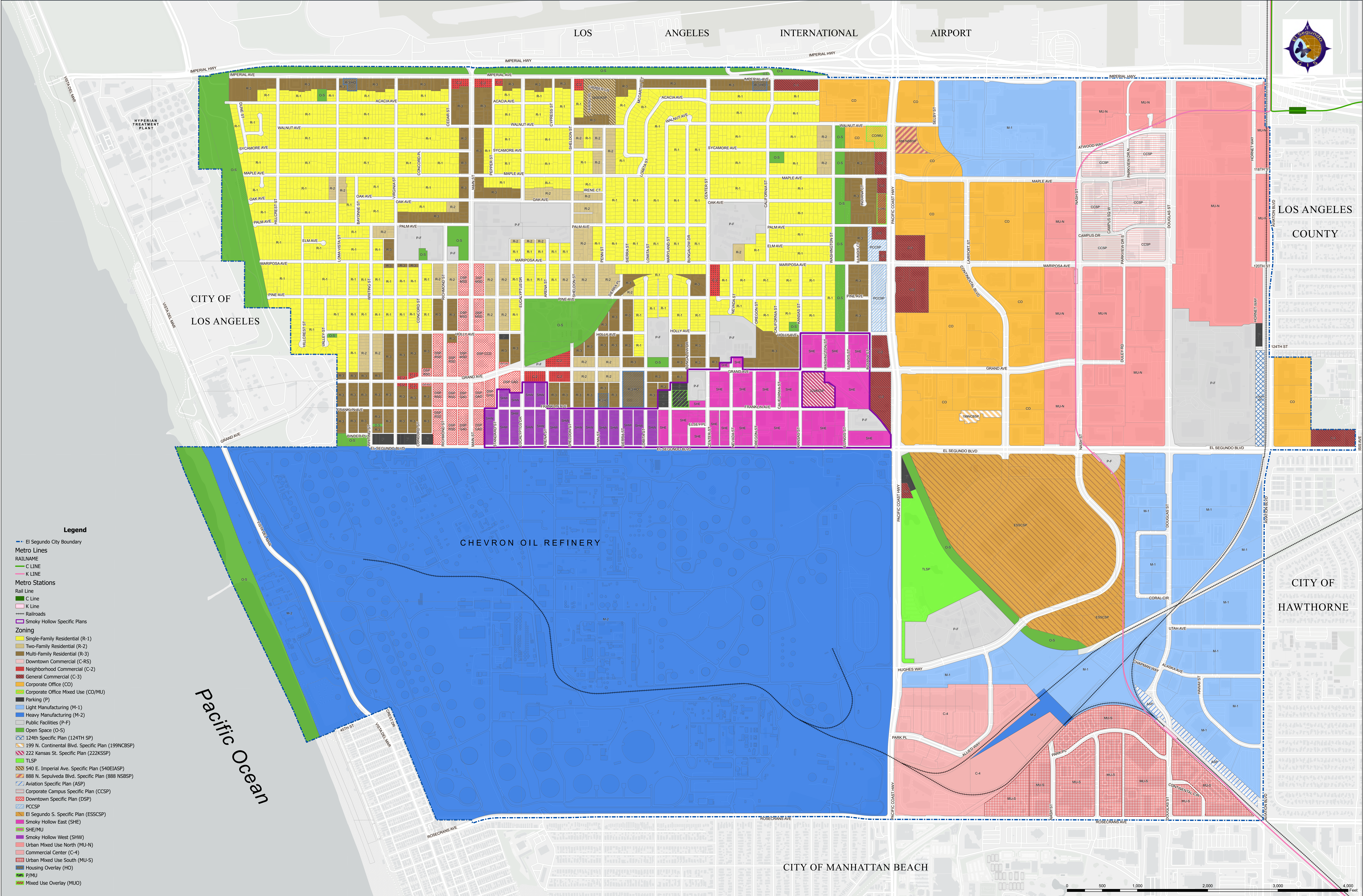


ZONING MAP

City of El Segundo

REVISIONS		12/07/99 (Ord. 1314)	10/16/09 (Ord. 1432)	08/14/19 (Ord. 5160)
11/16/93 (Ord. 1212)	08/01/00 (Ord. 1319)	03/19/10 (Ord. 1440)	05/22/10 (Ord. 1441)	11/05/19 (Ord. 1592)
02/06/96 (Ord. 1245)	01/02/02 (Ord. 1345)	05/22/10 (Ord. 1441)	05/04/12 (Ord. 1469)	03/15/22 (Ord. 5319)
06/16/97 (Ord. 1272)	09/02/03 (Ord. 1365)	05/04/12 (Ord. 1469)	10/04/12 (Ord. 1470)	05/16/24 (Ord. 1657)
02/15/99 (Ord. 1292)	09/11/03 (LAFCO 03-13RD)	05/14/14 (Ord. 1494)	02/22/16 (Ord. 1516)	05/21/24 (Ord. 1661)
08/17/99 (Ord. 1308)	04/15/05 (Ord. 1382)	10/02/18 (Ord. 1573)		3/2/2026 Correction
	12/15/05 (Ord. 1387)			
	09/05/08 (Ord. 1419)			



- Legend**
- El Segundo City Boundary
 - Metro Lines
 - RAILNAME
 - C LINE
 - K LINE
 - Metro Stations
 - Rail Line
 - C Line
 - K Line
 - Railroads
 - Smoky Hollow Specific Plans
 - Single-Family Residential (R-1)
 - Two-Family Residential (R-2)
 - Multi-Family Residential (R-3)
 - Downtown Commercial (C-RS)
 - Neighborhood Commercial (C-2)
 - General Commercial (C-3)
 - Corporate Office (CO)
 - Corporate Office Mixed Use (CO/MU)
 - Parking (P)
 - Light Manufacturing (M-1)
 - Heavy Manufacturing (M-2)
 - Public Facilities (P-F)
 - Open Space (O-S)
 - 124th Specific Plan (124TH SP)
 - 199 N. Continental Blvd. Specific Plan (199NCBSP)
 - 222 Kansas St. Specific Plan (222KSPP)
 - TLSP
 - 540 E. Imperial Ave. Specific Plan (540EIASP)
 - 888 N. Sepulveda Blvd. Specific Plan (888NSBSP)
 - Aviation Specific Plan (ASP)
 - Corporate Campus Specific Plan (CCSP)
 - Downtown Specific Plan (DSP)
 - PCCSP
 - El Segundo S. Specific Plan (ESSCSP)
 - Smoky Hollow East (SHE)
 - SHW/MU
 - Smoky Hollow West (SHW)
 - Urban Mixed Use North (MU-N)
 - Commercial Center (C-4)
 - Urban Mixed Use South (MU-S)
 - Housing Overlay (HO)
 - P/MU
 - Mixed Use Overlay (MUO)