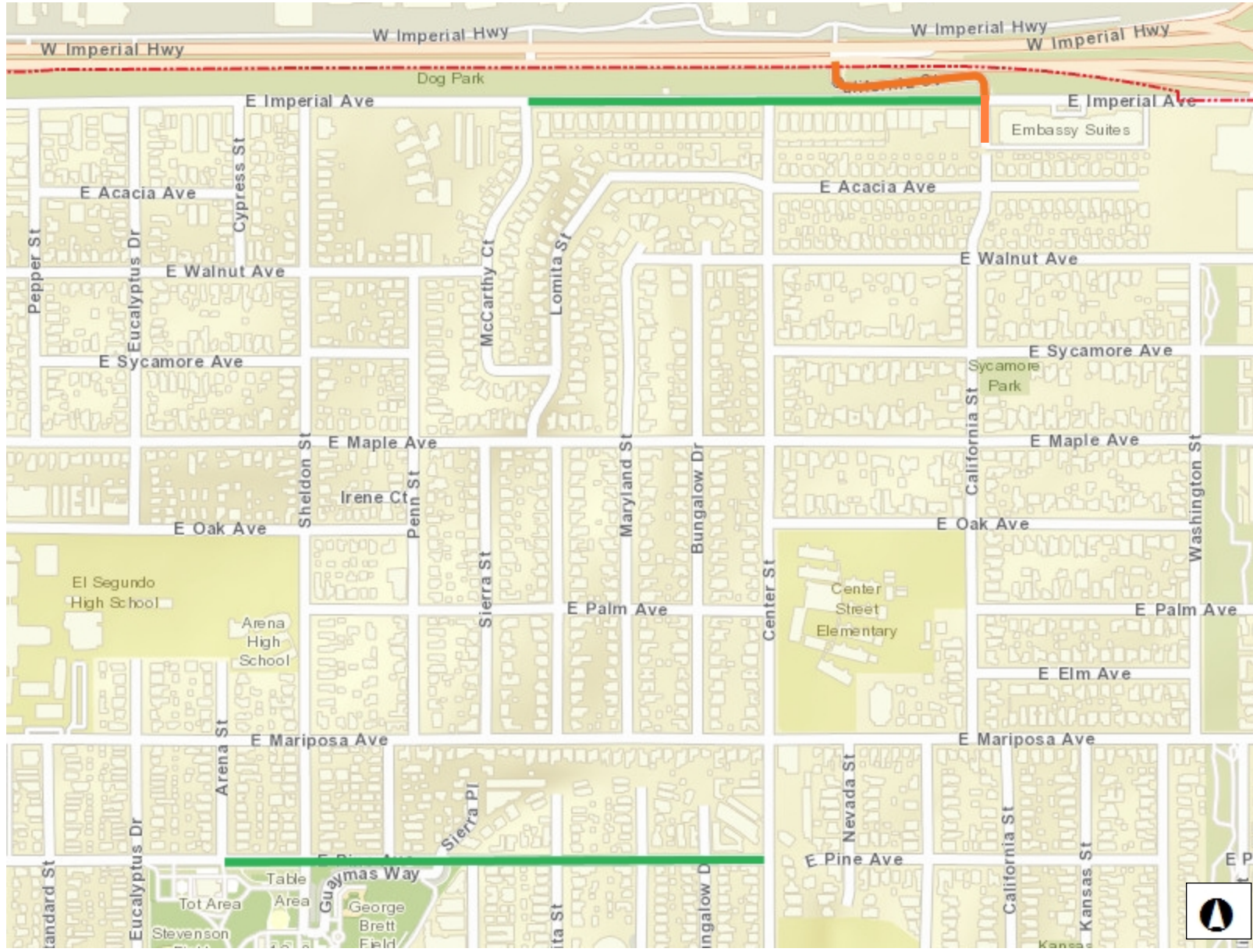




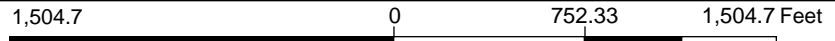
PW 20-01 FY 19/20 Pavement Rehabilitation



Legend

- City Boundary
- Streets to be paved
 1. E. Imperial Ave. - McCarthy Ct. to California St.
 2. E. Pine Ave. - Arena St. to Center St.
- Alternative Street for Paving
California Street - E. Imperial Hwy. to Cul-de-sac

Notes



WGS_1984_Web_Mercator_Auxiliary_Sphere

DISCLAIMER: The information shown on this map was compiled from different GIS sources. The land base and facility information on this map is for display purposes only and should not be relied upon without independent verification as to its accuracy. The City of El Segundo will not be held responsible for any claims, losses or damages resulting from the use of this map.