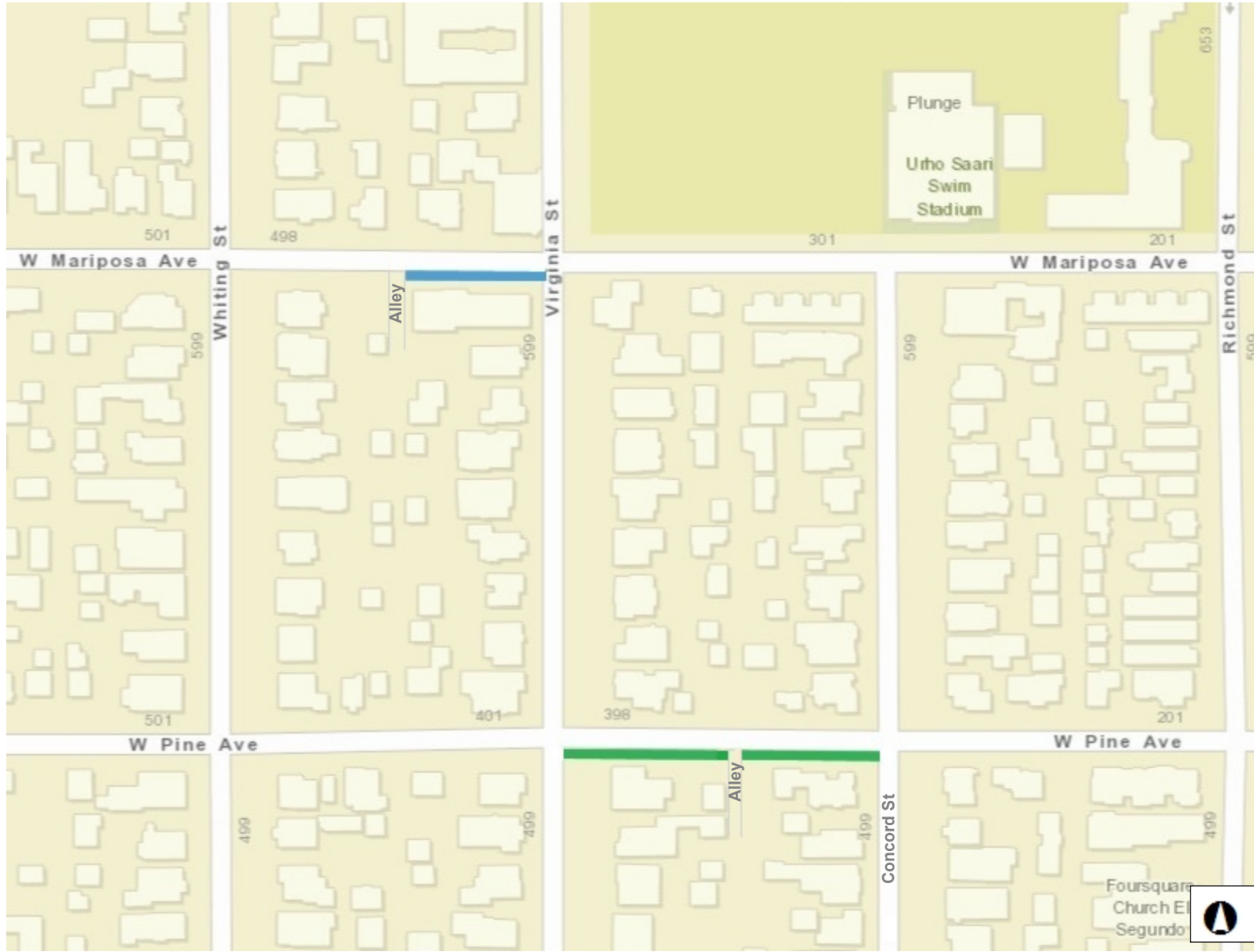




Location Map

Mariposa and Pine Proposed New Sidewalk Installations

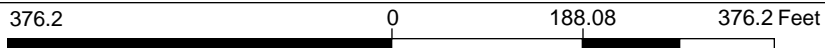


Legend

- City Boundary

- 500 Block W. Mariposa Ave.
 1. New sidewalk and curb
 2. New retaining wall

- 400 Block W. Pine Ave.
 1. New sidewalk and curb
 2. New parkway
 3. Replacement City trees



WGS_1984_Web_Mercator_Auxiliary_Sphere

DISCLAIMER: The information shown on this map was compiled from different GIS sources. The land base and facility information on this map is for display purposes only and should not be relied upon without independent verification as to its accuracy. The City of El Segundo will not be held responsible for any claims, losses or damages resulting from the use of this map.

Notes