

# ZONING MAP

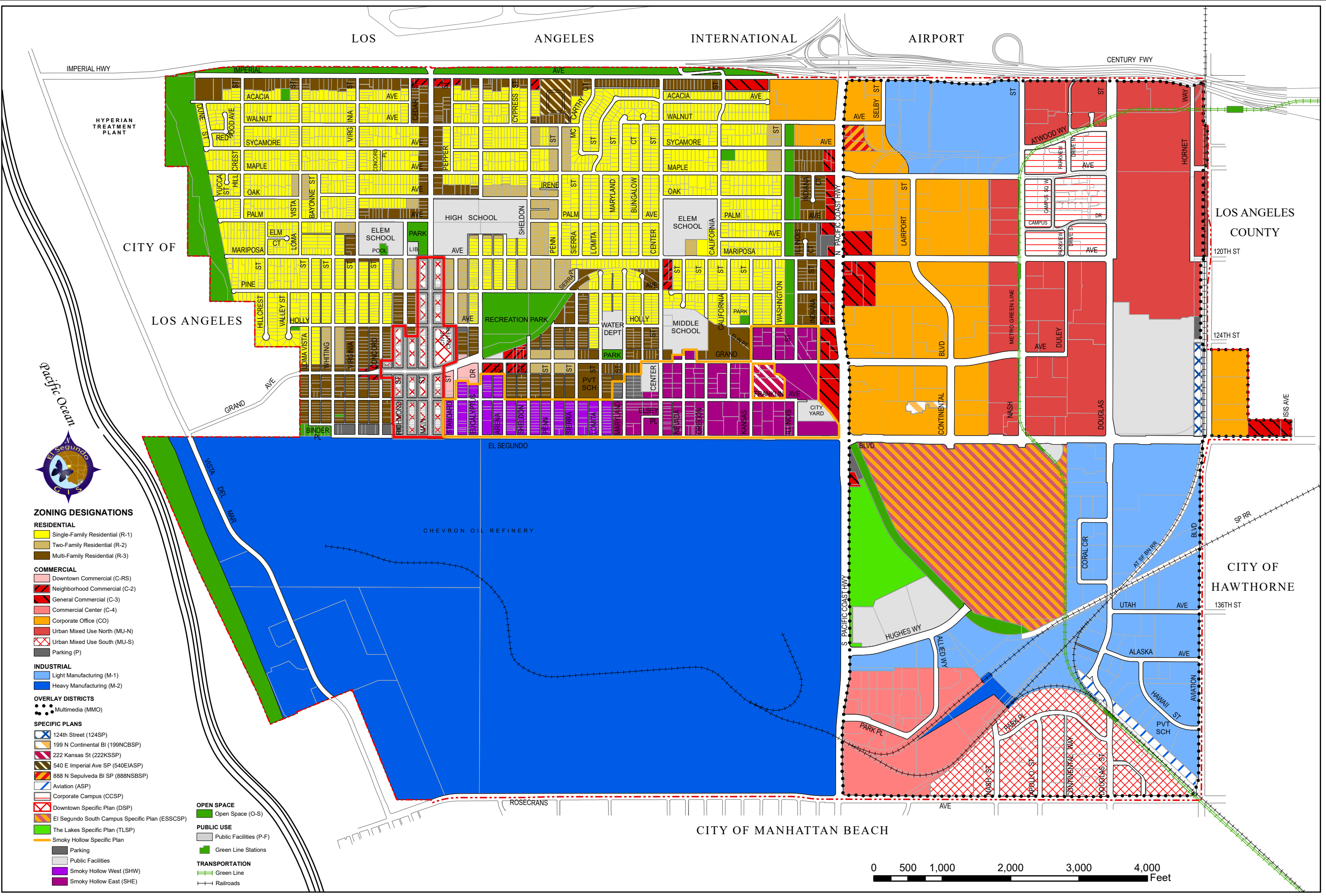
City of El Segundo

REVISIONS  
 11/16/93 (Ord. 1212)  
 02/06/96 (Ord. 1245)  
 06/16/97 (Ord. 1272)  
 10/10/97 (Ord. 1279)  
 02/15/99 (Ord. 1292)  
 08/17/99 (Ord. 1306)

12/07/99 (Ord. 1314)  
 08/01/00 (Ord. 1319)  
 01/10/02 (Ord. 1345)  
 09/02/03 (Ord. 1365)  
 09/11/03 (LAFCO 03-13RD)  
 04/15/05 (Ord. 1382)  
 12/15/05 (Ord. 1387)  
 09/05/08 (Ord. 1419)

10/16/09 (Ord. 1432)  
 03/19/10 (Ord. 1440)  
 09/22/10 (Ord. 1441)  
 05/04/12 (Ord. 1469)  
 10/04/12 (Ord. 1470)  
 05/14/14 (Ord. 1494)  
 02/22/16 (Ord. 1516)  
 10/02/18 (Ord. 1573)

1/10/19 (Ord. 1592)



- ZONING DESIGNATIONS**
- RESIDENTIAL**
- Single-Family Residential (R-1)
  - Two-Family Residential (R-2)
  - Multi-Family Residential (R-3)
- COMMERCIAL**
- Downtown Commercial (C-RS)
  - Neighborhood Commercial (C-2)
  - General Commercial (C-3)
  - Commercial Center (C-4)
  - Corporate Office (CO)
  - Urban Mixed Use North (MU-N)
  - Urban Mixed Use South (MU-S)
  - Parking (P)
- INDUSTRIAL**
- Light Manufacturing (M-1)
  - Heavy Manufacturing (M-2)
- OVERLAY DISTRICTS**
- Multimedia (MMO)
- SPECIFIC PLANS**
- 124th Street (124SP)
  - 199 N Continental BI (199NCBSP)
  - 222 Kansas St (222KSSP)
  - 540 E Imperial Ave SP (540EIASP)
  - 888 N Sepulveda BI SP (888NSBSP)
  - Aviation (ASP)
  - Corporate Campus (CCSP)
  - Downtown Specific Plan (DSP)
  - El Segundo South Campus Specific Plan (ESSCSP)
  - The Lakes Specific Plan (TLSP)
  - Smoky Hollow Specific Plan
- OPEN SPACE**
- Open Space (O-S)
- PUBLIC USE**
- Public Facilities (P-F)
  - Green Line Stations
- TRANSPORTATION**
- Public Facilities
  - Smoky Hollow West (SHW)
  - Smoky Hollow East (SHE)
  - Green Line
  - Railroads

