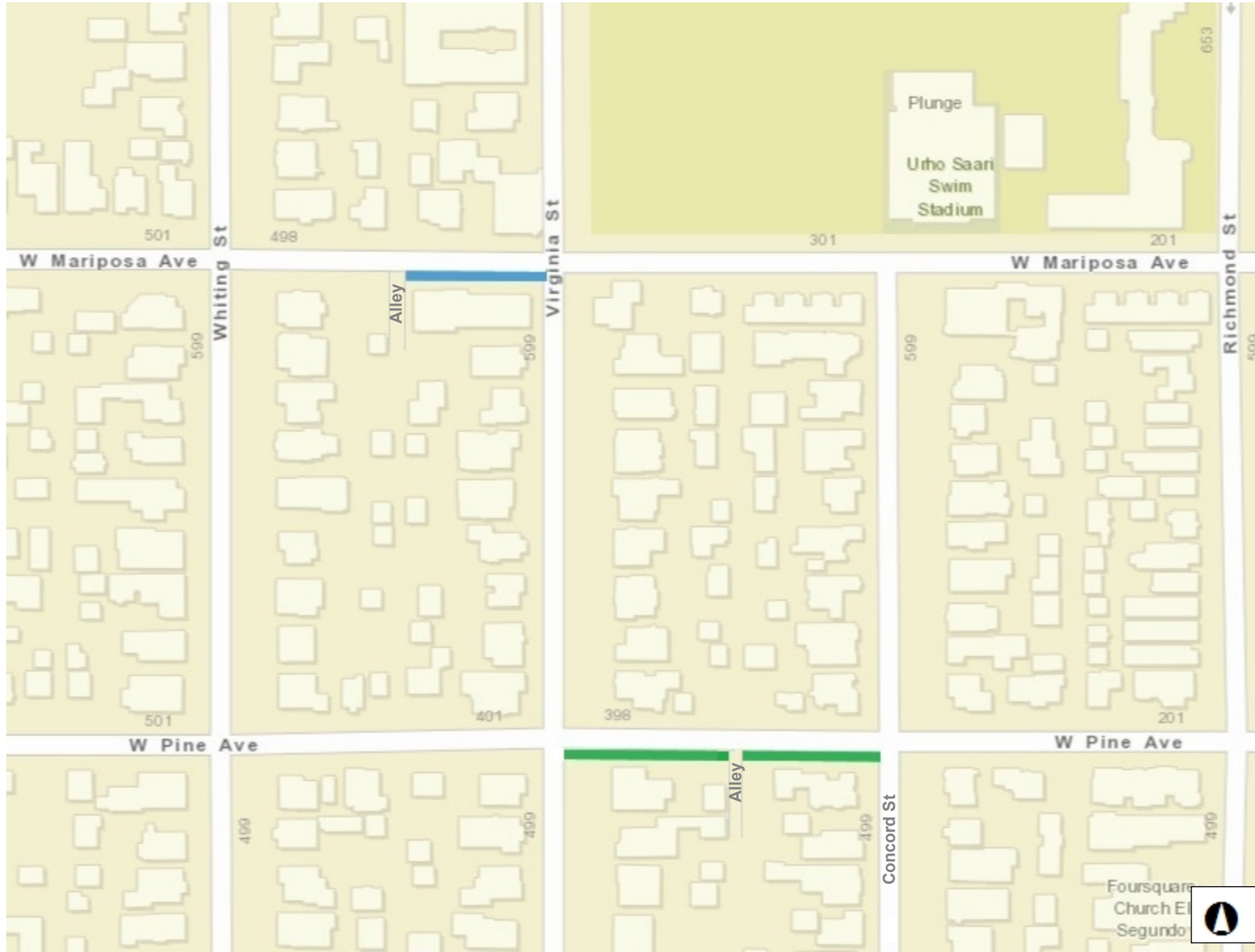




# Location Map

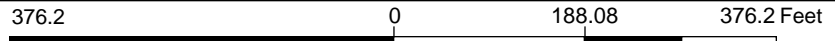
## W. Mariposa Ave. and W. Pine Ave. Sidewalk Construction Project



**Legend**

- City Boundary
- 400 Block W. Mariposa Ave.
  1. New sidewalk and curb
  2. New retaining wall
  3. New stairs and handrails
  4. Remove City trees
- 300 Block W. Pine Ave.
  1. New sidewalk and curb
  2. New parkway
  3. Remove City trees

**Notes**



*DISCLAIMER: The information shown on this map was compiled from different GIS sources. The land base and facility information on this map is for display purposes only and should not be relied upon without independent verification as to its accuracy. The City of El Segundo will not be held responsible for any claims, losses or damages resulting from the use of this map.*